



Introduction Presentation

Our innovative fenestration system , developed for the discerning specifier



Who are 10EXP Aluminium?

- Extensive experience in the field of architectural glass and aluminium
- Professional entity
- High Quality Standards
- Integrity and Customers Service
- Innovative
- Fully compliant with industry standards
- 1 x 2 suppliers in the Western Cape with rights to 10EXP
- BEE – Level 2





Why 10EXP?

- Exceptional Quality
- Cost effective
- Lifetime Guarantee
- Superior acoustic capabilities
- 100% watertight
- Withstands extreme wind loads
- Slimline sections
- Great aesthetics



Why was 10EXP developed

- Requirement for a superior product in the current fenestration market
- Develop a system that consists of fewer profiles
- Address limitations of other systems
- Save cost on wastage
- Method to overcome waterproofing challenges
- Competes with European systems
- Design Freedom due to the modular design
- Conforms to all AAMSA standards
- Excellent sound insulation properties.

 **10EXP**TM



Benefits of 10EXP

- Unique and attractive
- Less wastage resulting in cost saving to client
- Ability to grow/extend installed product post installation
- Facilitates option to change colour of the shopfront
- High quality specification
- Most viable solution for high end aluminium fenestration systems



10EXP™

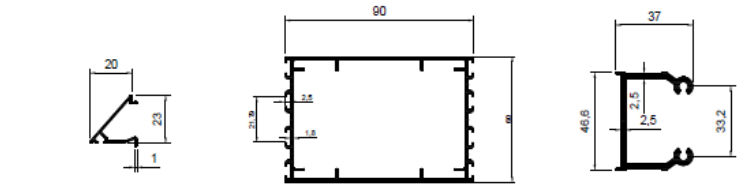


Product Overview

- Windows
- Doors
- Shopfronts
- Flush/Pressure Glazed
- Furniture
- Tiny Houses
- Mobile Shower Enclosures

 **10EXP**TM

Die Chart



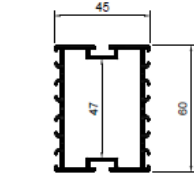
BEAD20
SCALE 1:2

6090
SCALE 1:2

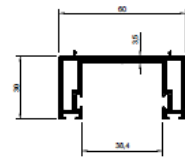
SPIGOT
SCALE 1:2



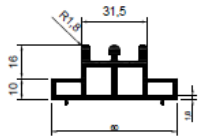
60CLIP
SCALE 1:2



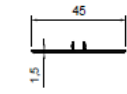
4560
SCALE 1:2



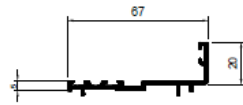
FEMALE
SCALE 1:2



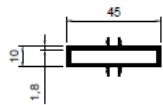
MALE
SCALE 1:2



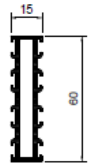
45CLIP
SCALE 1:2



REBATE
SCALE 1:2



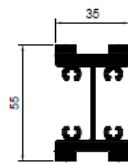
1045
SCALE 1:2



1560
SCALE 1:2



BEAD10
SCALE 1:2



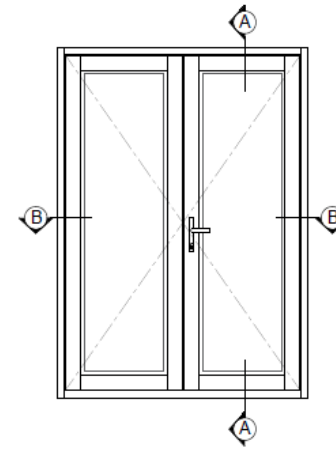
INSERT
SCALE 1:2

DIE CHART

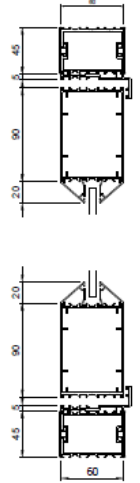
①



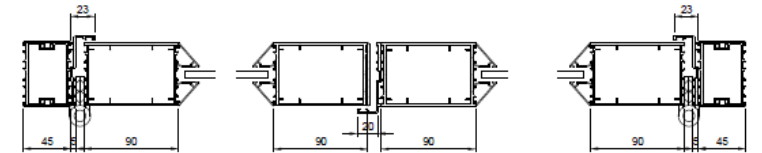
Products



ELEVATION
SCALE 1:25



SECTION A-A
SCALE 1:4



SECTION B-B
SCALE 1:4

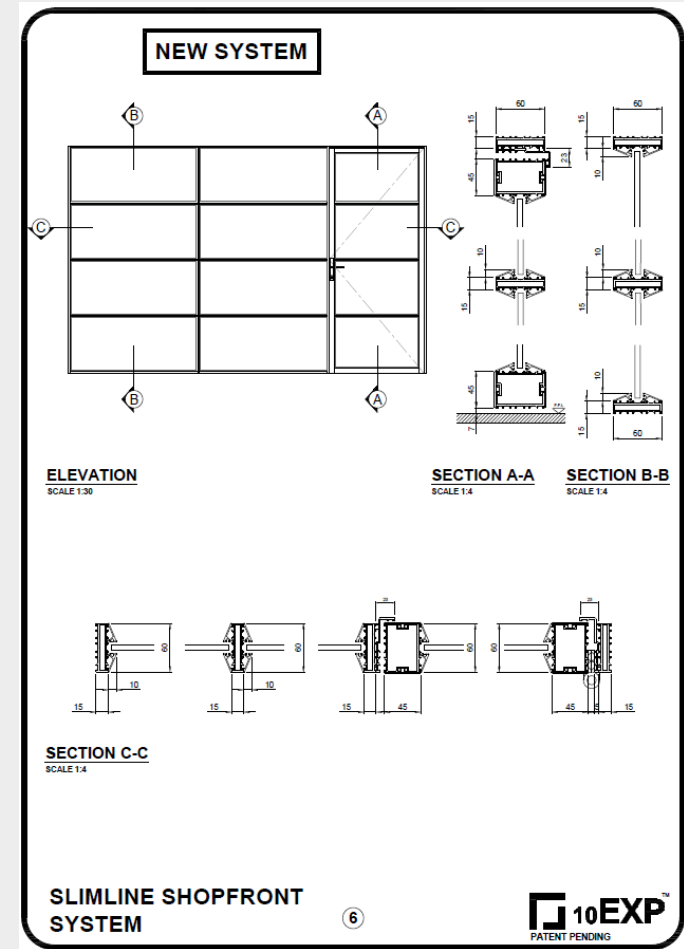
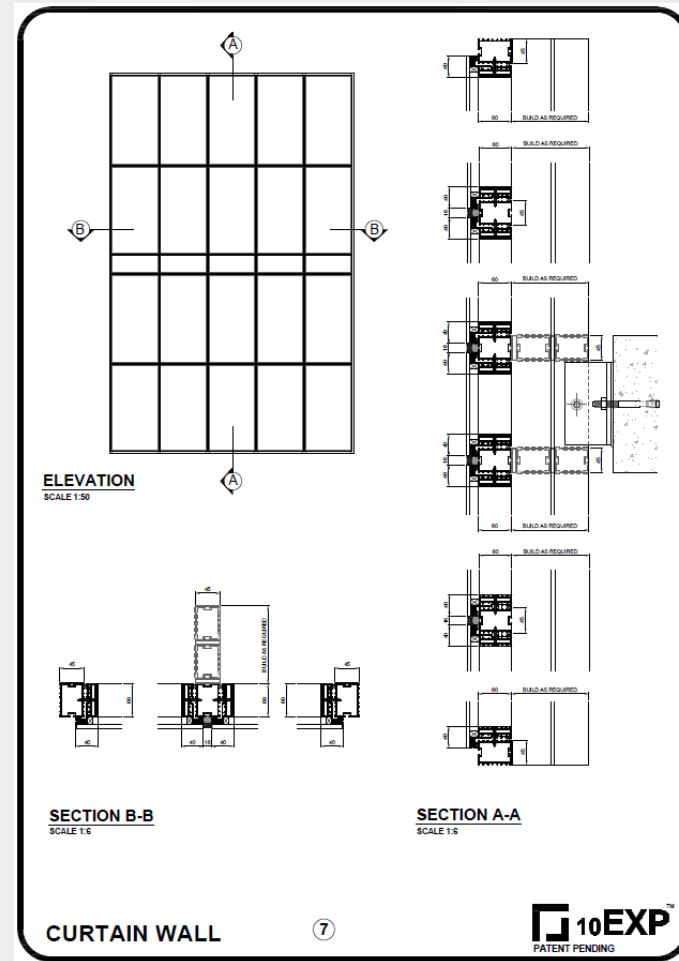
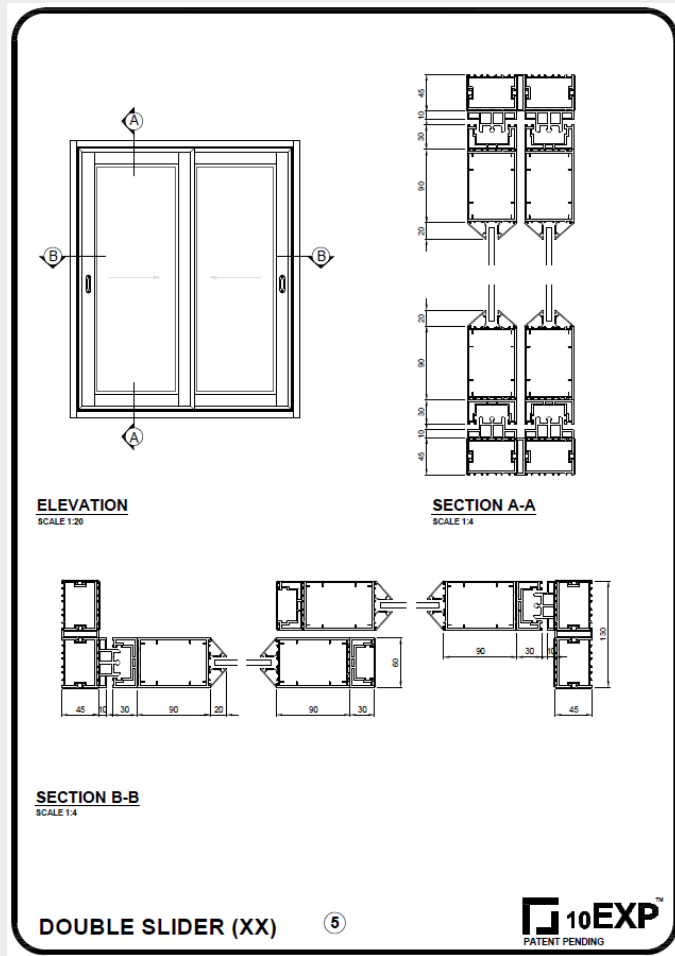
SHOPFRONT DOOR

②

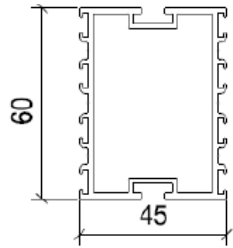




Products



Slimline sections allow for "New York" loft style

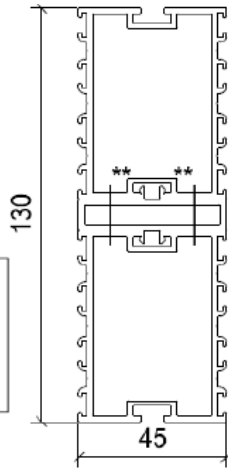


Single Mullion – Sectional Properties

Cross Sectional Area: 463.320 mm²

$$I_{xx} = 22.36 \text{ cm}^4$$

$$Z_{xx} = 7.453 \times 10^3 \text{ mm}^3$$

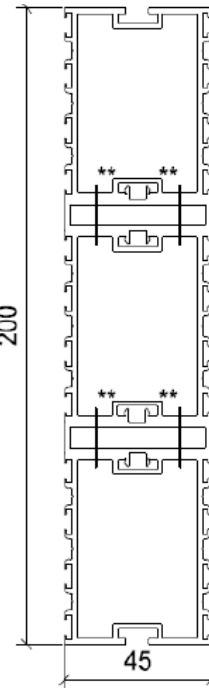


Double Mullion – Sectional Properties

Cross Sectional Area: 1129 mm²

$$I_{xx} = 158.6 \text{ cm}^4$$

$$Z_{xx} = 24.397 \times 10^3 \text{ mm}^3$$

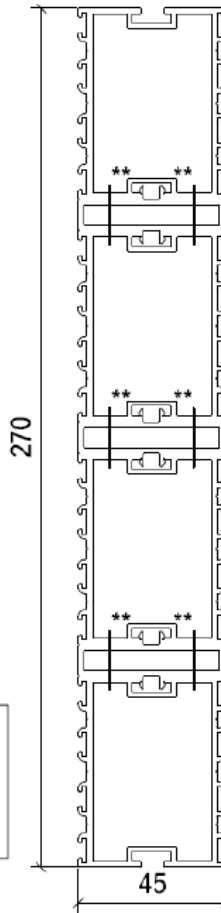


Triple Mullion – Sectional Properties

Cross Sectional Area: 1794 mm²

$$I_{xx} = 571.3 \text{ cm}^4$$

$$Z_{xx} = 57.14 \times 10^3 \text{ mm}^3$$



Quadruple Mullion – Sectional Properties

Cross Sectional Area: 2459 mm²

$$I_{xx} = 1394 \text{ cm}^4$$

$$Z_{xx} = 103.3 \times 10^3 \text{ mm}^3$$

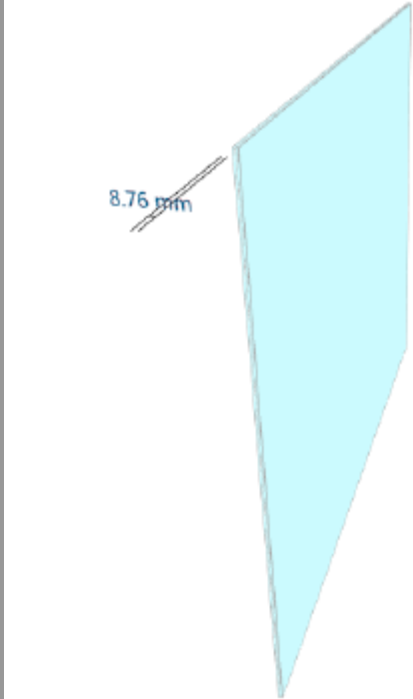
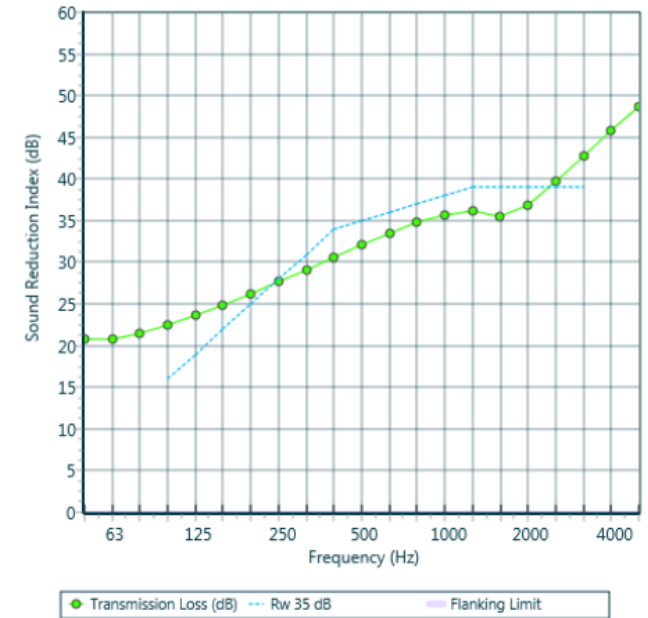
**** 2No. ROWS OF 10g SELF
DRILLING SCREWS @ 250mm c/c**

Product Overview

Single Glazed – 8.76

Neoprene Acoustic seals are employed to ensure superior sound reduction performance (acoustic foam if required)

| freq.(Hz) | TL(dB) | TL(dB) |
|-----------|--------|--------|
| 50 | 21 | |
| 63 | 21 | 21 |
| 80 | 21 | |
| 100 | 22 | |
| 125 | 24 | 24 |
| 160 | 25 | |
| 200 | 26 | |
| 250 | 28 | 28 |
| 315 | 29 | |
| 400 | 31 | |
| 500 | 32 | 32 |
| 630 | 33 | |
| 800 | 35 | |
| 1000 | 36 | 36 |
| 1250 | 36 | |
| 1600 | 35 | |
| 2000 | 37 | 37 |
| 2500 | 40 | |
| 3150 | 43 | |
| 4000 | 46 | 45 |
| 5000 | 49 | |



Rw 35 dB
C 0 dB
Ctr -3 dB

Slimline, 15mm x 60mm sections, allows for additional acoustic performance

Panel Size = 2.0 m x 1.5 m

Partition surface mass = 28.1 kg/m²

System description

Pane 1 + 1 x 8.8 mm Laminated Glass (generic PVB)

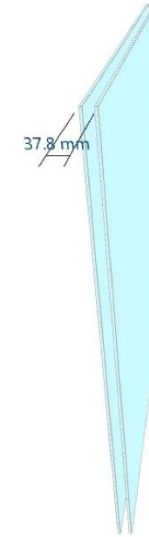
- Key No. 4300
 Job Name:
 Job No.:
 Date.:2019/02/25
 File Name:

Initials:Rachel

Notes:

Decoupled Double Glazed

SOUND ACOUSTIC RATING $R_w = 41\text{dB}''$



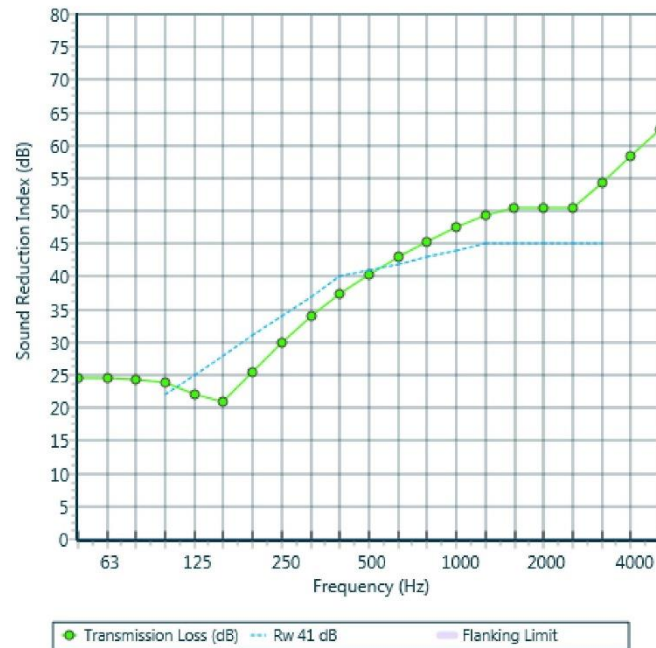
R_w 41 dB
 C -2 dB
 Ctr -7 dB

Mass-air-mass resonant frequency = 136 Hz

Panel Size = 2.0 m x 1.5 m

Partition surface mass = 30.6 kg/m²

| freq.(Hz) | TL(dB) | TL(dB) |
|-----------|--------|--------|
| 50 | 25 | |
| 63 | 25 | 24 |
| 80 | 24 | |
| 100 | 24 | |
| 125 | 22 | 22 |
| 160 | 21 | |
| 200 | 25 | |
| 250 | 30 | 29 |
| 315 | 34 | |
| 400 | 37 | |
| 500 | 40 | 40 |
| 630 | 43 | |
| 800 | 45 | |
| 1000 | 48 | 47 |
| 1250 | 49 | |
| 1600 | 50 | |
| 2000 | 51 | 51 |
| 2500 | 51 | |
| 3150 | 54 | |
| 4000 | 58 | 57 |
| 5000 | 62 | |



System description

Pane 1 + 1 x 6.4 mm Laminated Glass (generic PVB-0.38 mm)

air: 25 mm

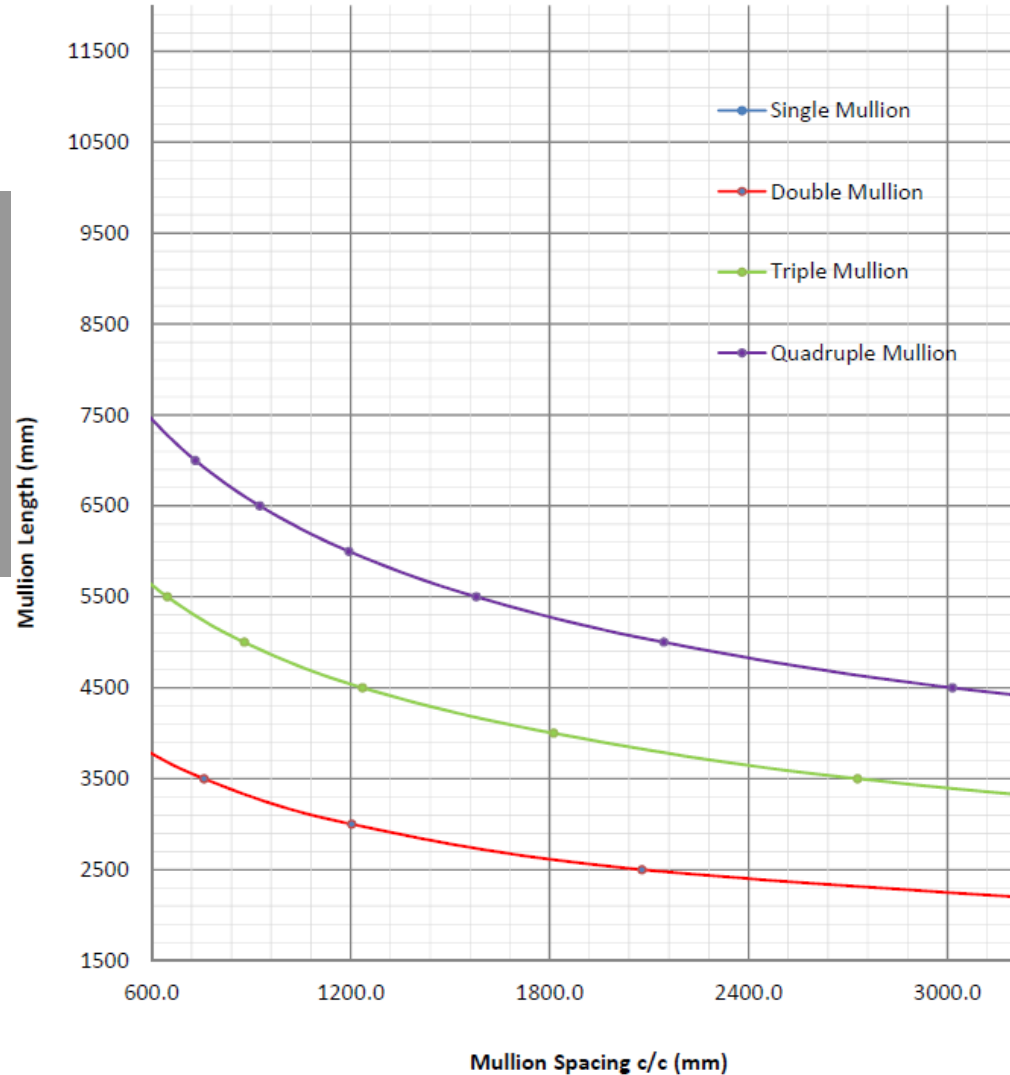
Pane 2 + 1 x 6.4 mm Laminated Glass (generic PVB-0.38 mm)

| DESCRIPTION | | | | | | OCTAVE 1 | OCTAVE 2 | OCTAVE 3 | OCTAVE 4 | OCTAVE 5 | OCTAVE 6 | OCTAVE 7 |
|---------------|-------------|---------------|-----------|-----------|-----------|-----------|-----------|-----------|-----------|-----------|-----------|-----------|
| PANE 1 | AIR GAP | PANE 2 | RW | C | Ctr | 50 - 80 | 100-160 | 200-315 | 400-630 | 800-1250 | 1600-2500 | 3150-5000 |
| 6.38mm | 50mm | 6.38mm | 44 | -3 | -9 | 23 | 20 | 33 | 43 | 50 | 54 | 60 |
| 6.38mm | 25mm | 6.38mm | 41 | -2 | -7 | 24 | 22 | 29 | 40 | 47 | 51 | 57 |
| 6.38mm | 16mm | 6.38mm | 40 | -2 | -6 | 25 | 25 | 26 | 37 | 45 | 49 | 55 |
| 6.38mm | 16mm | 6.76mm | 40 | -2 | -6 | 25 | 25 | 26 | 37 | 45 | 49 | 56 |
| 6.38mm | 12mm | 6.38mm | 39 | -1 | -5 | 25 | 26 | 26 | 36 | 44 | 47 | 54 |
| 4mm | 16mm | 8mm | 39 | -4 | -9 | 25 | 23 | 21 | 39 | 47 | 50 | 48 |
| 5mm | 11.5mm | 6.76mm | 39 | -2 | -6 | 24 | 26 | 25 | 34 | 43 | 47 | 48 |
| 6mm | 16mm | 6mm | 38 | -4 | -8 | 24 | 20 | 21 | 39 | 46 | 42 | 44 |
| 8.76mm | | | 35 | 0 | -3 | 21 | 24 | 28 | 32 | 36 | 37 | 45 |

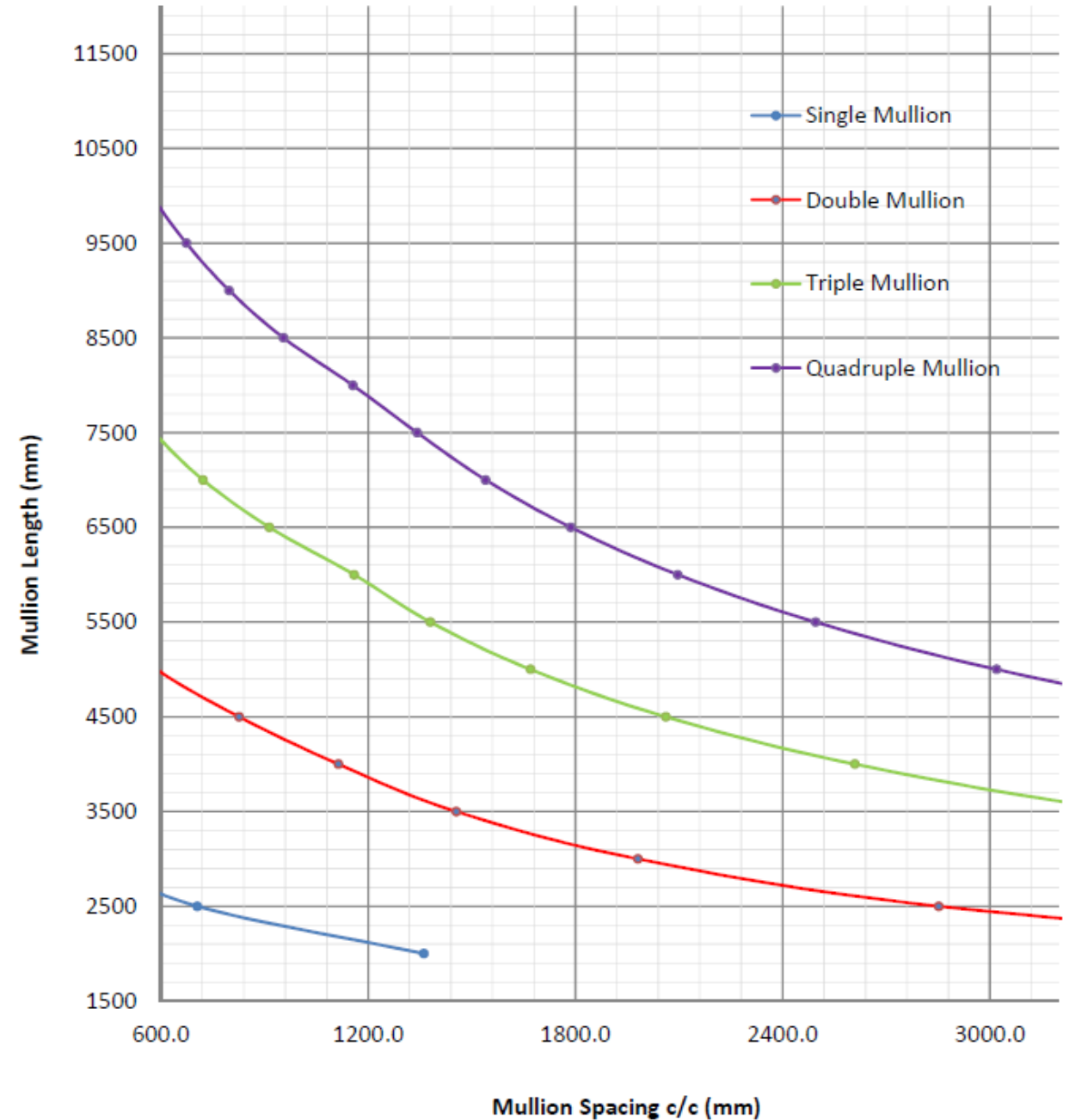
Glazing Acoustic Comparison

Deflection Charts – 1500Pa

1500Pa Single Span Mullion Deflection



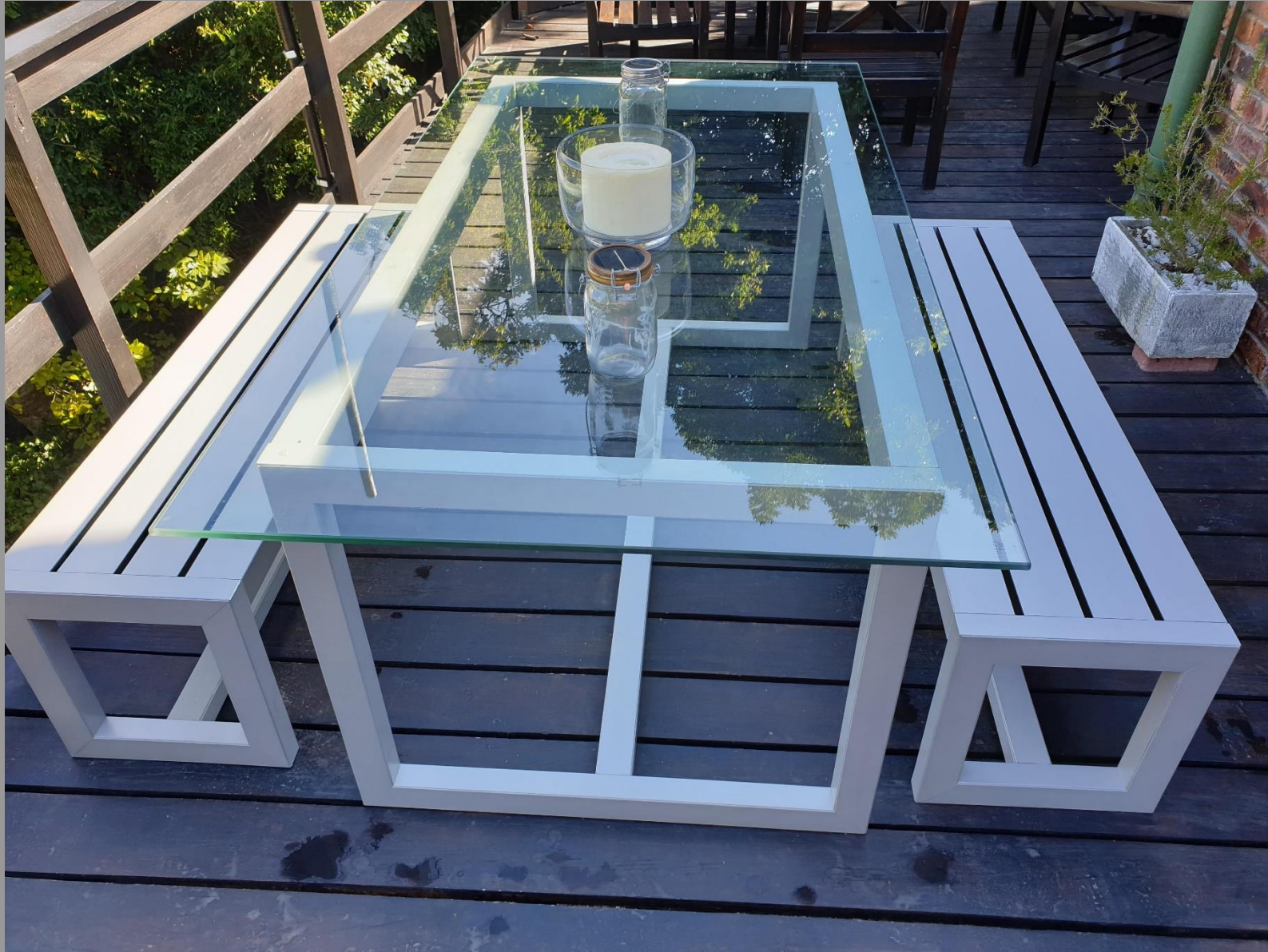
1500Pa Double Span Mullion Deflection



Executive Mobile Shower

- Slimline Design
- Completely waterproof
- Easy to relocate
- Custom design





Furniture

- A variety of modular design available
- Lifetime guarantee
- Range of colours
- Hard wearing
- UV stable



Available across all market sectors

- Commercial
- Residential
- Hospitality
- Retail